

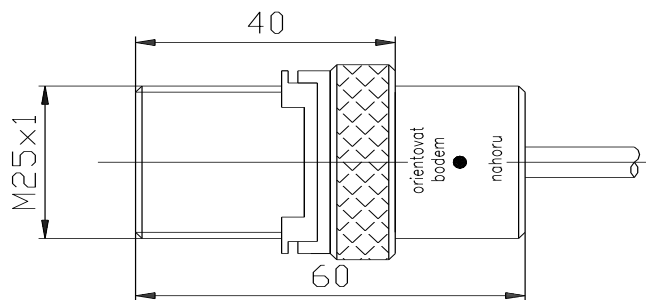
Sensor for flow control – SP1 and SP2

Sensors SP 1 and SP 2 make possible to follow the achieved value of any selected flow.

Senzor SP 1 – constantly connected at the minimum desired selected value

Senzor SP 2 – constantly connected at the maximum desired selected value

The sensor is located on the flowmeter – type AF, BF, CF, DF, NF and DPH into the groove on the backside of the flowmeter. The installation and adjustment of the sensor are made by its fitting on and moving to the point of the selected flow value. Then screw the sensor or its holder so, that **the sensor will be as near as possible to the measuring tube and the rivet head will be directed up simultaneously.**



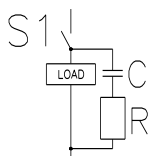
Orientovat bodem nahoru – Set the point up!

Technical parameters and requirements:

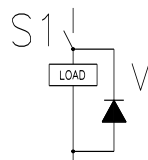
Maximum current: 0,4 A
Maximum voltage: 60 V
Max. making capacity: 10
Working temperature: 0 – 60°C
Protection: IP 44

Recommended contact protection during the inductive load:

$U \sim VAC$



$U = VDC$



During the inductive or resistive load:

$U \sim VAC$ nebo $U = VDC$

